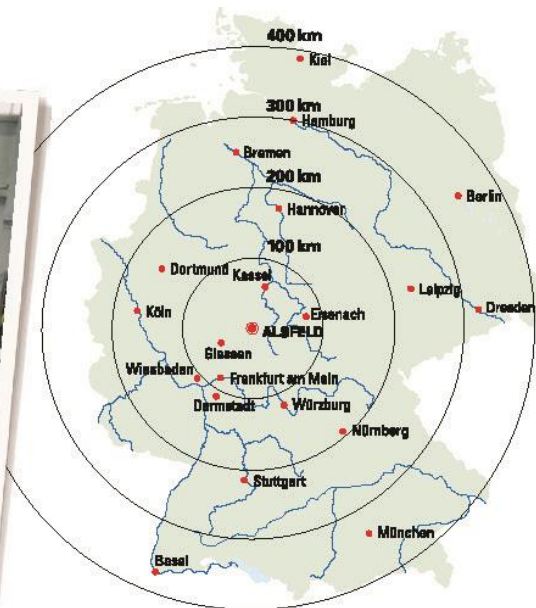


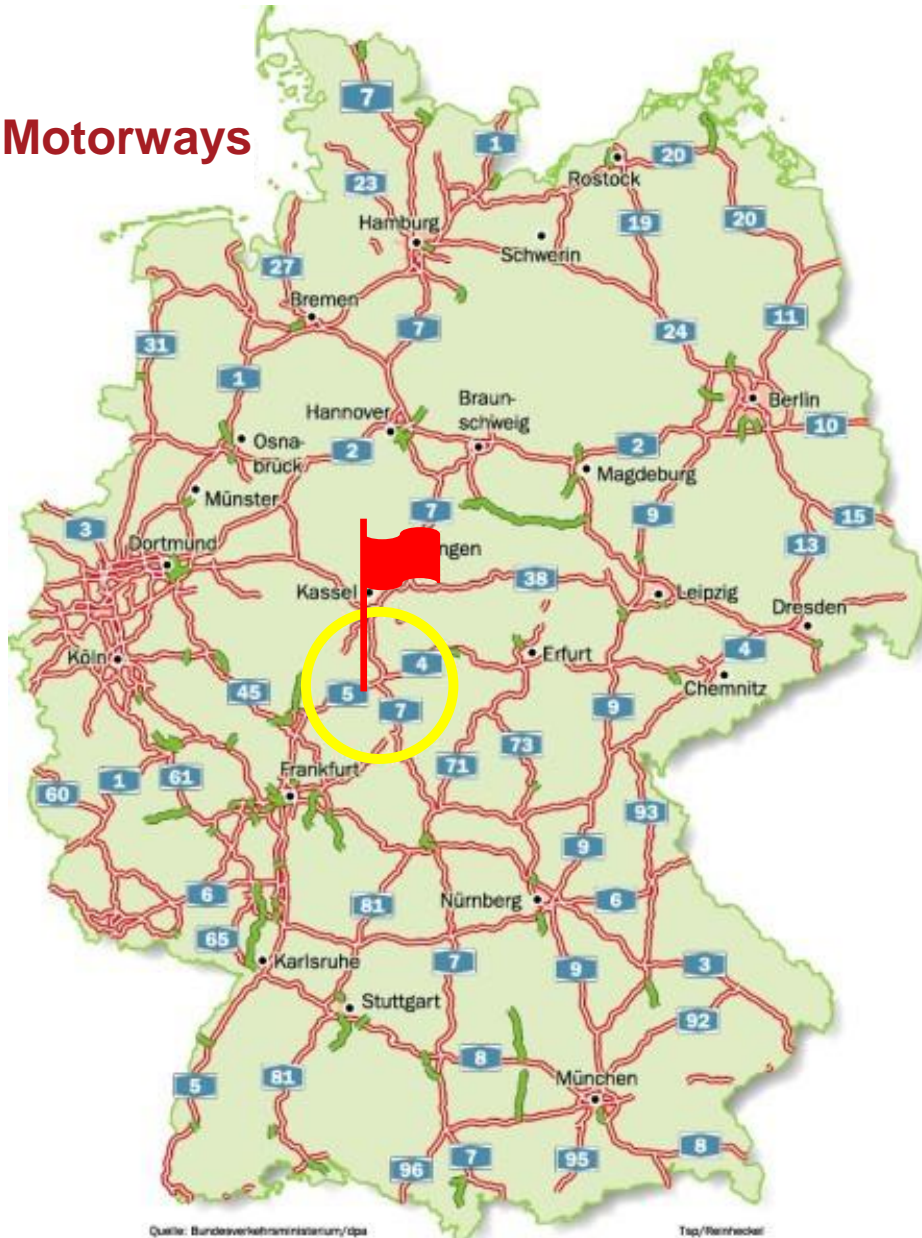


Alsfeld: We have plots for your ideas

Our industrial area „B 62“



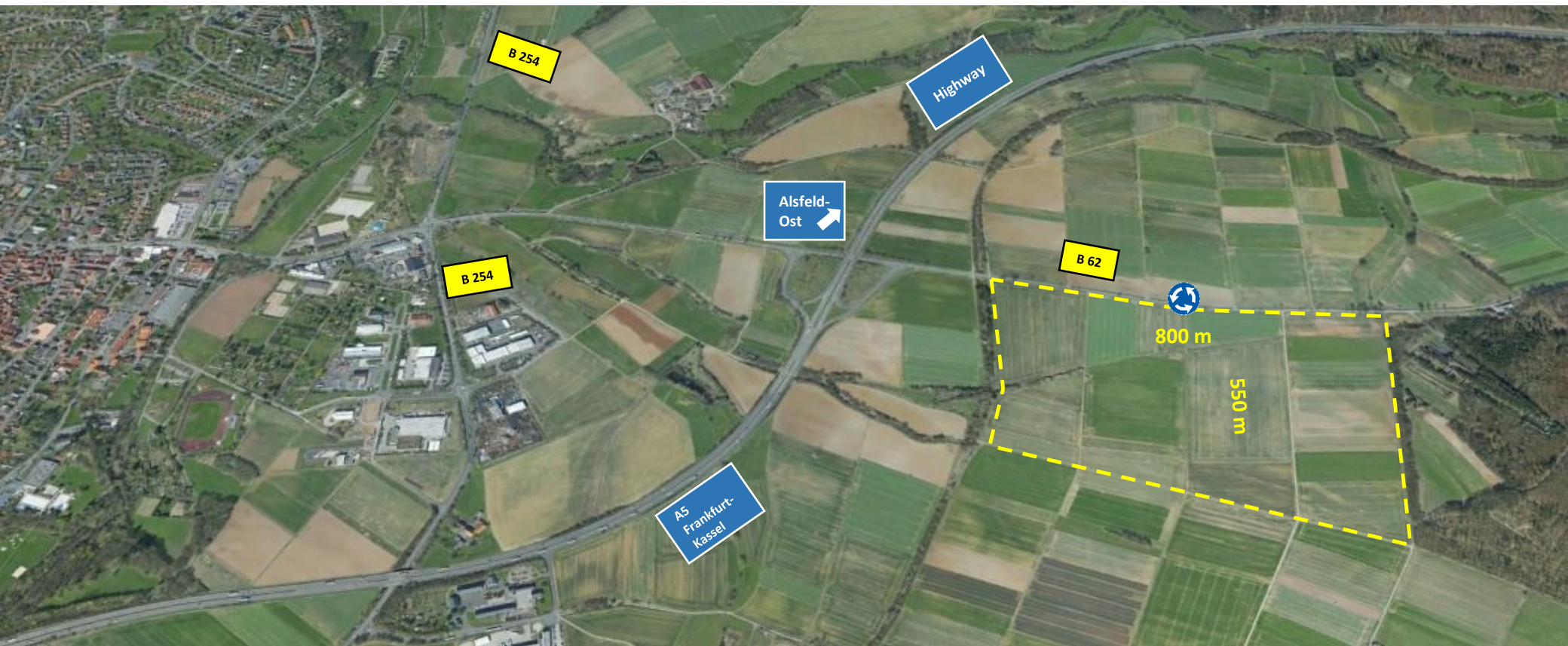
Motorways



Alsfeld: In a Nutshell!
Germany's true centre.

Total area: Ca. 440.000 sqm
Still available: Ca. 440.000 sqm
Plot configurations: 50.000 – 440.000 sqm by request, max. 800 m x 550 m
Visibility: Visible from the motorway
Motorway: Motorway A 5 (Frankfurt/Main – Kassel), Exit Alsfeld/Ost: 300 m
Next petrol station: 1.100 m
Next airport: Frankfurt/Main 100 km, Kassel 90 km
Next railway station: Alsfeld City 2,5 km
Next bus stop: 100 m, (can be organized)
Lead time to ground breaking: 2,5 Years
Federal land utilization ordinance: GI 24/7 (planned)

Industrial Area „B 62“



Alsfeld: Distinguished* – In the Heart of Europe.

Central in Germany. In the middle of Hessen.

Kontakt zum Bürgermeister:

Stephan Paule

Phone: +49 (0)6631 182-100
 buergermeister@stadt.alsfeld.de


Kontakt zur Wirtschaftsförderung:

Uwe Eifert

Phone: +49 (0)6631 182-125
 wirtschaftsfoerderung@stadt.alsfeld.de



www.alsfeld.de

- ✓ Immediately usable, affordable commercial space directly along motorways and federal roads
- ✓ Directly at the logistics hub A5 / A7 / A4
- ✓ Two motorway connections: A5 Kassel-Frankfurt
- ✓ Frankfurt Airport 100 km, Kassel Airport 90 km
- ✓ Experience and tradition in various production and service areas
- ✓ Part of a strong region with many well-known companies
- ✓ Sustainability, innovation and the future
- ✓ Active business promotion with the best networking
- ✓ Federal support for improving regional economic structures
- ✓ Well-trained workforce
- ✓ Two preparatory schools with afternoon care, general and secondary school, grammar school
- ✓ Vocational grammar school, vocational school, technical secondary school, higher vocational school
- ✓ Various professional schools and regional professional courses
- ✓ The Staatliche Technikakademie (professional school for construction technology), the Vogelsberger Pflegeakademie (healthcare academy)
- ✓ Special schools with a focus on learning and mental, physical and motor development
- ✓ adult education centre, music school, public library, city archive
- ✓ Eight day care centres with U3 support, school-related youth work
- ✓ Homework support, childminder network
- ✓ District hospital, nursing care, social service, two old-age and nursing homes, senior citizens' residence



*The "Distinguished residence for professionals and executives" seal of quality was introduced by the Chamber of Industry and Commerce for the metropolitan region of Frankfurt-Rhine-Main. Alsfeld is the 25th municipality to receive this distinction.